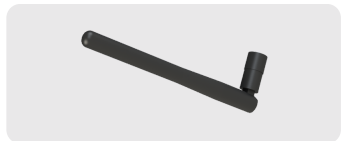
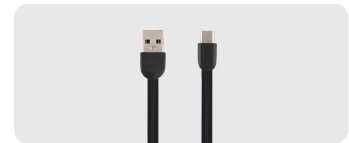
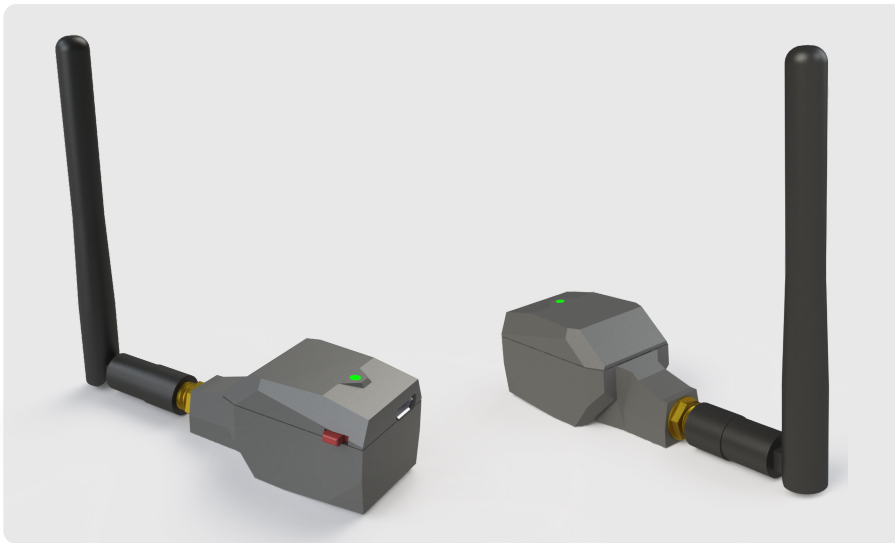



FLY ID pro

DIRECT REMOTE IDENTIFICATION 

New regulations require professional drone pilots in the European Union to make their drones digitally visible. Fly ID is an add-on module that instantly makes drones compliant with the latest DRI standards. Fly ID Pro transmits your drone's position & informations by Bluetooth up to a distance of 3 km. Be visible, be safe.



CERTIFICATION

PREN 4709-002 EASA 

Fly ID systems comply with the prEN 4709-002 standard, which requires direct remote identification for drones weighing more than 250 grams and flying at less than 120 metres in the specific category.



ASK OUR SALES TEAM YOUR QUESTIONS



SPECIFICATIONS

5 H
AUTONOMY

30 G
WEIGHT

35 x 25 x 19
DIMENSIONS (MM)

3 KM
RANGE

30 SEC
INSTALLATION
TIME

2.4 GHZ
BLUETOOTH
TRANSMISSION

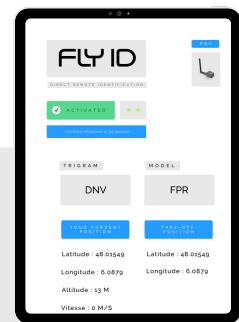
**ULTRA
STRONG**
ATTACHMENT SYSTEM

**INDICATION
SYSTEM**
BY LEDS

MICRO-USB
CHARGING

WEB INTERFACE

Fly ID system has a web interface that can be accessed from any device via a WIFI connection. You can use it to configure the beacon with your operator number, type of aircraft and update the system.



COMPATIBLE WITH TRACKERS APPS

Fly ID tags are compatible with drone tracking applications such as DroneScanner and OpendroneID. Connect to these applications, and easily manage your flights.

